

Carolyn Ray JAZZ LACE

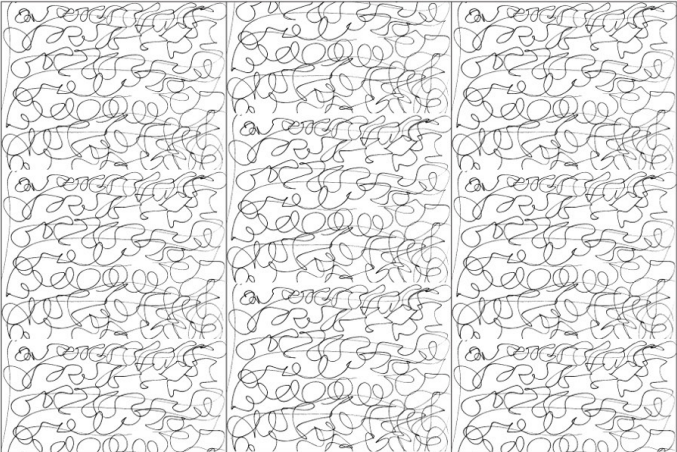


Y135-01 JAZZ LACE Lady Day

Freehand jazz lace motif, handpainted pigmented glaze on linen sheer.

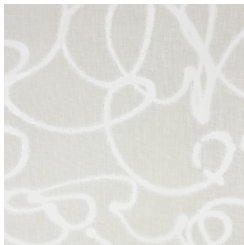
100% linen sheer, 54" width, 40" repeat
Height and Layout to Customer Specification
Custom Available

Design Layout

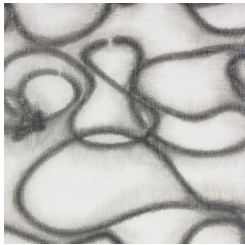


Standard Layout (108" height by 3 full width panels)

Colorways



Y135-01 Lady Day



Y135-02 Smoke